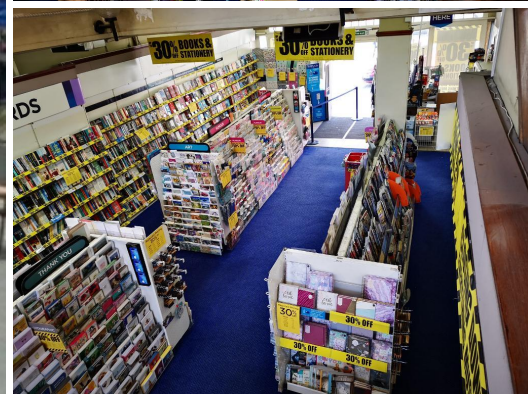




Est :1964

Commercial Premises

£1,200<sub>PCM</sub>



## Station Road Colwyn Bay, LL29 8BU

This unit is full of history and has been trading for over 30 years as a WH Smith Store. Located in Station Road in the heart of Colwyn Bay town centre. Colwyn Bay offers everything a retail store could want including increasing footfall due to the local authority's commitment to improving the town centre.

The retail unit is close to the train station, A55 and other good road links. In addition there is local carpark offering plenty of cheap parking for the locals to enjoy local shopping.

When you visit Colwyn Bay Shopping Centre you will be able to shop, dine and unwind. It's a truly quant, historic place and full of Victorian architecture.

To view these premises and for more information please call us on 01492 545665

## Key Features

2000 Square Feet Retail Space

Town Centre Location

Close To Train Station

Close to A55 Good Road Access

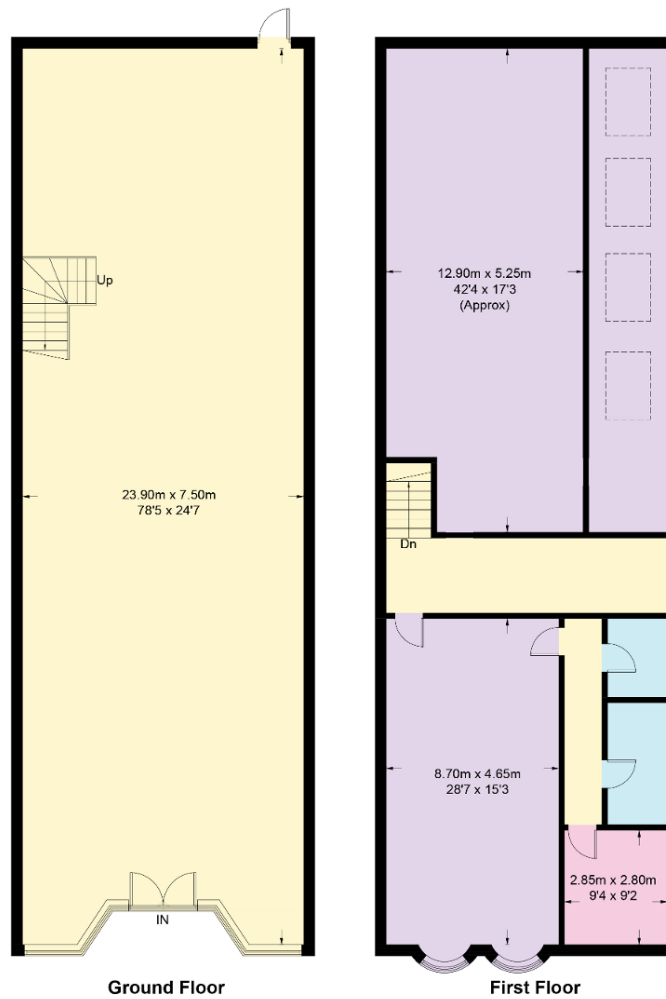
Office Space & Storage



# Floorplan

## W. H. Smiths Station Road, LL29 8BU

Approximate Gross Internal Area = 355.2 sq m / 3823 sq ft



Ground Floor

First Floor

This plan is for layout guidance only. Not drawn to scale unless stated. Windows and door openings are approximate. Whilst every care is taken in the preparation of this plan, please check all dimensions, shapes and compass bearings before making any decisions reliant upon them.  
FloorplansUsketch.com © 2021 (ID806987)